



# RBS Projects



# SUMMARY

ABOUT US	3
OUR TEAM	4
OUR PHILOSOPHY	5
WHAT WE DO	6
OUR PORTFOLIO	7-19
CLIENT TESTIMONY	20-21
OUR CLIENTS	22
CORPORATE AND SOCIAL RESPONSIBILITY	23



# ABOUT US

Founded RBS Projects (previously known as Raguz Building Services) in 2005 to form a sustainable and continually improving construction company that delivers quality projects and services for various clients.

Our goal is to provide consistent and superior constructions to our clients while fostering lasting relationships with professionals, local councils, government bodies, trade contractors and suppliers.

RBS is well-equipped to undertake the most technical construction, refurbishments, and interior fit-out projects from design to handover.

**“We aim to exceed expectations through the quality of our work and expertise.”**

## **Our scope of work ranges from:**

Design and Construct  
Construction Management  
Project Management  
Consulting

Every project is different. We work closely with you to make your plans a reality.

As a member of Master Builders Australia, we hold ourselves to an exceptionally high standard of work, ensuring that apart from the high quality of our projects, we are continually improving our systems, reducing our carbon footprint, and recycling to do our part for the environment.

## **Our Expertise**

- Childcare centres
- High-security facilities: Vaults strongrooms, banking & financial
- Office fit-outs: Various professional services, CBD and office park fit-outs
- Industrial and Commercial: New buildings and major refurbishments
- Hospitality: Pubs, restaurants, and clubs
- Medical: Hospitals, aged care, clinical, dental
- Retail fit-out
- Schools and Government: Public sector projects
- Green Star sustainable building



# OUR TEAM

Our highly experienced and skilled team is here to solve all of your design and construction related needs.



**Ilija Raguz**  
CEO & Founder



**Ludwig Tremmel**  
General Manager



**Nada Ninkovic**  
Business Development  
Manager



**Vedran Karoglan**  
Project Manager



**Karl Mikl**  
Project Manager



**Joshua Furrer**  
Estimator



**Bea Sunglao**  
Contract Administrator



**Aya Daher**  
Project Coordinator



**Ali Malik**  
Accounts Manager



**Marcus Power**  
Site Manager



**Chris Walters**  
Site Manager



**Mirko Kelava**  
Site Manager

The team at RBS Projects is committed to designing and completing high-quality projects.

Our continuous experience and desire to innovate make RBS Projects an ideal partner for solving even the most challenging construction problems.



# OUR PHILOSOPHY

Our values aren't just words on paper.

It is the attitude we bring to every project.

We're proud of every project executed because we know that only our best work has gone into it.



## Reliable

We hold ourselves to an exceptionally high standard, always offering a five-star service.



## Responsible

We ensure your project is delivered on time and within budget for a seamless handover.



## Quality

We construct and build to last. We only source quality and environmentally friendly building materials for only high-end finishes.



## Transparent

We are always a phone call away and offer consistent communication for all projects.



### **Construction**

Turnkey construction of commercial, and industrial buildings.



### **Fit-out**

We source and furnish equipment for office, retail, and commercial fit-outs.



### **Refurbishment**

We provide partial remodelling of stores, and other commercial spaces.



### **Creative Ideas**

We'll turn your ideas into reality and get you the best fit-out solution for your company.



### **Design**

Whether commercial, or industrial, we work with you to meet all design needs.



### **Make Good**

We help you return the premises in the condition defined by the lease on expiry.

# WHAT WE DO

Our team helps companies turn their desires into reality through effective and superior design solutions.

We handle construction, fit-outs, refurbishments, relocation of businesses, as well as make goods.



# OUR PORTFOLIO

## ANSTO – Nandin Research Centre



Project Type:  
**Government**



Client:  
**ANSTO**



Program:  
**14 Weeks**



Size:  
**1200m<sup>2</sup>**



Project Value:  
**\$1.5-2 Million**

The Nandin Research Centre at the ANSTO Lucas Heights Facility is a new tech hub for tech start-ups and ANSTO's research teams.

Through a successful tender bid, RBS was engaged to revamp the dated existing building to provide a space that served the occupant's needs while adhering to the facility's strict security protocols.

Some key features included extensive veneer wall panelling and bulkheads, custom mesh and timber balustrade and a complete external facelift.

# The Junction Works Seven Hills



Project Type:  
**Commercial**



Client:  
**The Junction Works**



Program:  
**12 Weeks**



Size:  
**1200m2**



Project Value:  
**\$1-2 Million**

The Junction Works is a private organisation that provides educational and entertainment services for adults with disabilities throughout the Greater Sydney Area.

Due to their popularity, the organisation had outgrown their facility in Austral. It, therefore, required a new flagship centre which would allow them to serve their current students better and enable them to expand their services.

Through a successful value engineering process, RBS Projects provided a facility that met all client and student needs. It completed two weeks early of the 14-week timeline and achieved a 25% cost saving on the original budget pricing provided at tender time.

The new centre utilises vibrant colour schemes and many textures to create a vibrant space for its patrons and staff.



# Clever Ain't Wise



Project Type:  
**Retail**



Client:  
**Clever Ain't  
Wise**



Program:  
**8 Weeks**



Size:  
**200m2**



Project Value:  
**\$500 Thousand**

The RBS Projects team accommodated the client's requests on this high-end boutique fit-out. This included custom-formed joinery and polished stainless steel hanging rails, all within a tight time frame.

In just eight weeks, RBS Projects transformed the formerly bare concrete space into a beautiful, elegant boutique retail store in Zetland.

# Custodian Vaults



Project Type:  
**High Security**



Client:  
**Custodian  
Vaults**



Program:  
**24 Weeks**



Size:  
**400m2**



Project Value:  
**\$2-3Million**

Challenging yet fulfilling, this project involved the construction of an underground vault in the Sydney CBD, which included a state-of-the-art security system and bullet/blastproof structure.

The critical challenge was the logistics and installation of a custom-made 3-ton vault door. The project was completed on time and exceeded the client's expectations, given the complexity and unique nature.



# Montessori Academy Childcare Kirrawee



Project Type:  
**Childcare**



Client:  
**Montessori Academy**



Program:  
**16 Weeks**



Size:  
**1200m2**



Project Value:  
**\$2-2.5 Million**

RBS Projects had the pleasure of rolling out multiple Montessori Academy's high-end childcare centres. Situated in the South Village precinct in Kirrawee, the Montessori and RBS Projects teams were delighted with how this centre was executed.

With extensive use of spotted gum for decking and custom timber structures as well as vibrantly coloured, shaped bulkheads with LED strip lighting to create a fun space for the patrons of this centre.



# Montessori Academy Childcare Zetland



Project Type:  
**Childcare**



Client:  
**Montessori Academy**



Program:  
**16 Weeks**



Size:  
**1000m2**



Project Value:  
**\$1-2 Million**

Due to the rapid increase in population growth in the Zetland area, Montessori Academy hired our team to fit out a wholly enclosed childcare centre on the 5th floor of the Victoria Park building.

The space was designed to integrate the administrative, learning and play areas seamlessly.



# Montessori Academy Childcare Toongabbie



Project Type:  
**Childcare**



Client:  
**Montessori  
Toongabbie**



Program:  
**20 weeks**



Size:  
**600m2**



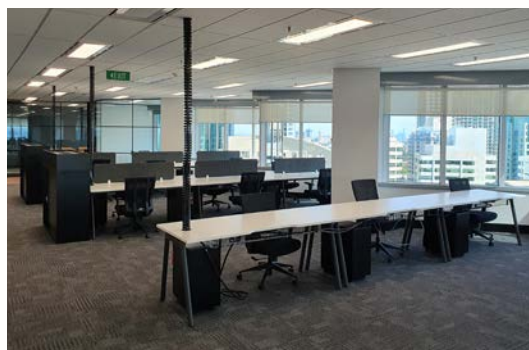
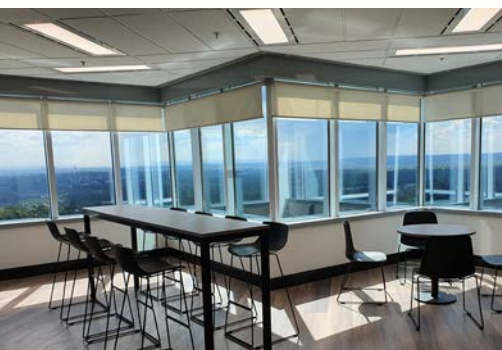
Project Value:  
**\$2-3 Million**

Built over three levels, this project included fitting out three specialist Montessori classrooms and two dynamic outdoor play areas.

With additional landscaping and a car park below, this project was completed on time and to an exacting standard.



# Zenith Tower Spec Fit-Out



Project Type:  
**Commercial**



Client:  
**Centuria**



Program:  
**6 Weeks**



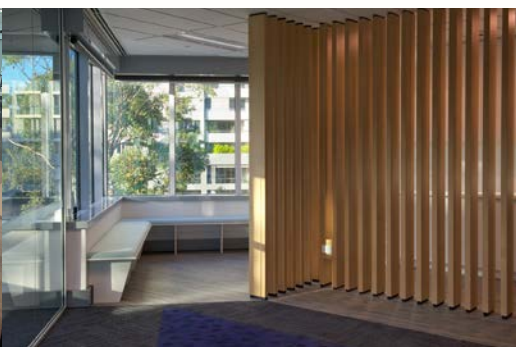
Project Value:  
**\$500k-1 Million**

In collaboration with our in-house design team, RBS Projects facilitated the design and construction of this modern-look office fit-out.

A key focus of this build was achieving the high-end feel the client wanted whilst keeping to a designated budget.



# Zenith Tower Lobby Upgrade



Project Type:  
**Commercial**



Client:  
**Centuria**



Program:  
**6 Weeks**



Size:  
**6 Levels**



Project Value:  
**\$1.5-2 Million**

RBS Projects achieved a stylish upgrade for six floors of common areas in the Zenith Chatswood building. The formerly uninviting dark lobby areas have been transformed into lighter, more inviting spaces.

The work involved after-hours to change the floors' finishes, ceilings, lift reveals and glazing with new custom directory boards for each tenancy.

Whilst keeping disruption to a minimum, the RBS team completed the upgrade to satisfy all parties involved.

# Zenith Tower Amenities Upgrade



Project Type:  
**Commercial**



Client:  
**Centuria**



Program:  
**24 Weeks**



Project Value:  
**\$1.5-2 Million**

RBS Projects was engaged to upgrade amenities across multiple occupied floors at the Zenith Towers in Chatswood.

Working exclusively out of hours, through extensive coordination with trades and building management, the team delivered the areas on time with minimum disruptions, much to the occupant's and client's satisfaction.

# New Amenities- North Sydney Council



Project Type:  
**Government**



Client:  
**North Sydney Council**



Program:  
**12 Weeks**



Size:  
**200m2**



Project Value:  
**\$500 Thousand**

RBS Projects was engaged to construct a new amenities facility within the confines of the Alexander Street Shopping Centre car park.

This was a challenging project due to the location and extra safety precautions required whilst operating within an active car park. As a result, many of the works were completed out of hours, minimising the impact on the customers visiting the shopping centre.



# Wentworth Point Medical Centre



Project Type:  
**Healthcare**



Client:  
**My Health**



Program:  
**4 weeks**



Size:  
**400m2**

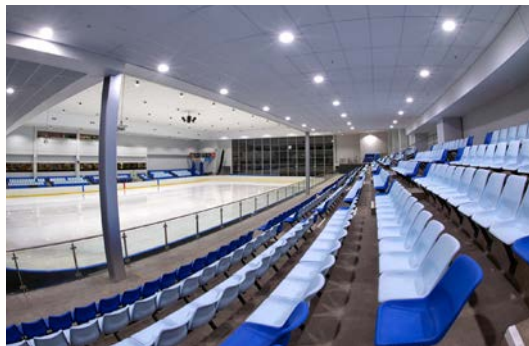
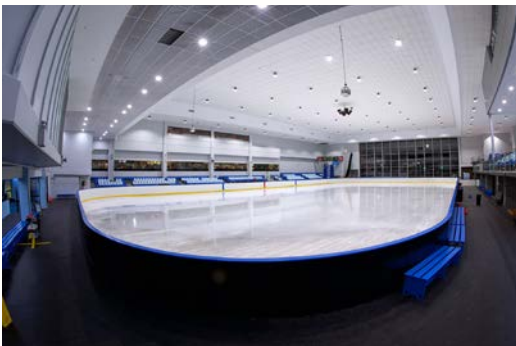


Project Value:  
**\$1 Million**

A clinic transformed into a sleek and modern medical centre in Wentworth Point's new and rapidly expanding residential area.

The design was completed in the record time of four weeks on a limited access site with very tight deadlines, ready for accreditation and opening day.

# Macquarie Ice Rink



Project Type:  
**Commercial**



Client:  
**AMP**



Program:  
**20 Weeks**



Size:  
**1200m2**



Project Value:  
**\$2-3 Million**

As the Ice Rink had to remain operational during the entire refurbishment, this was a challenging project, meaning that much of the work was completed at night, outside regular trading hours.

This project gave the ageing ice rink a new lease of life and was on time and on budget, ready for a scheduled international hockey game.



# CLIENT TESTIMONY

Our client relationships are based on mutual trust and respect, which is key to the success of any project. Here is what our clients are saying about us.



**Janie Simpson,  
CEO**

ABC Bullion & Custodian Vaults

Building a high-security, underground vault is a notoriously hard job. There aren't many people in the world with the know-how. But we've used Ilija and his team before and were very confident they could do it, no matter what obstacles they found in the way... This included the handling of one of the thickest and heaviest steel doors in Australia. The end result is Australia's best ultra-secure private vault, with a finish and attention to detail our staff and clients love.



**Sandra McIntosh,  
HR Manager**

Regeneus. Inc

Nothing was a headache. RBS were really flexible and let us make decisions on the spot and design as we went. They finished the job on time and on budget, working weekends and after hours to beat our tight deadline. I'd definitely work with Ilija and his team and have no hesitation recommending them to anyone else.



” **Charles Assaf,**  
**CEO**

### Montessori Academy

Montessori Academy has partnered with Raguz Building Services (RBS) to co-create exceptional early learning centres catering to children aged six weeks to six years since 2015.

Over the past five years, RBS has completed several projects for Montessori Academy with each centre catering to 75-90 children with each location being highly unique, ranging from the fitout of commercial premises in East Village, Zetland and Little Saigon Plaza, Bankstown, through to the refurbishment of the historic Boys' Town Memorial Hospital in Engadine.

Throughout each project, RBS worked closely with the Montessori Academy Team to create child care fitouts that met highly specific internal, industry, and regulatory standards.

Each project was delivered to the highest standards, on time, and on budget with excellent project management and communication by the RBS Team.



# OUR CLIENTS





# SOCIAL & CORPORATE RESPONSIBILITY

We have an obligation to support those in our community who may be disadvantaged.

Through our corporate and social responsibility initiatives, we have supported community events, grassroots sporting teams, and various other community causes.

Our employees enthusiastically participate in these community events, volunteer, and support initiatives such as fundraisers.

Some of the charities we have helped and continue to support are:



DRUG ARM AUSTRALASIA  
Helping people build a better life








## Contact Us

 PO Box 828,  
Kingsgrove NSW 2208

 [info@rbsprojects.com.au](mailto:info@rbsprojects.com.au)

 +61 (02) 8084 6793

 [www.rbsprojects.com.au](http://www.rbsprojects.com.au)



**Master Builders Association**  
**MEMBER**  
MASTER BUILDER, BETTER BUILDER